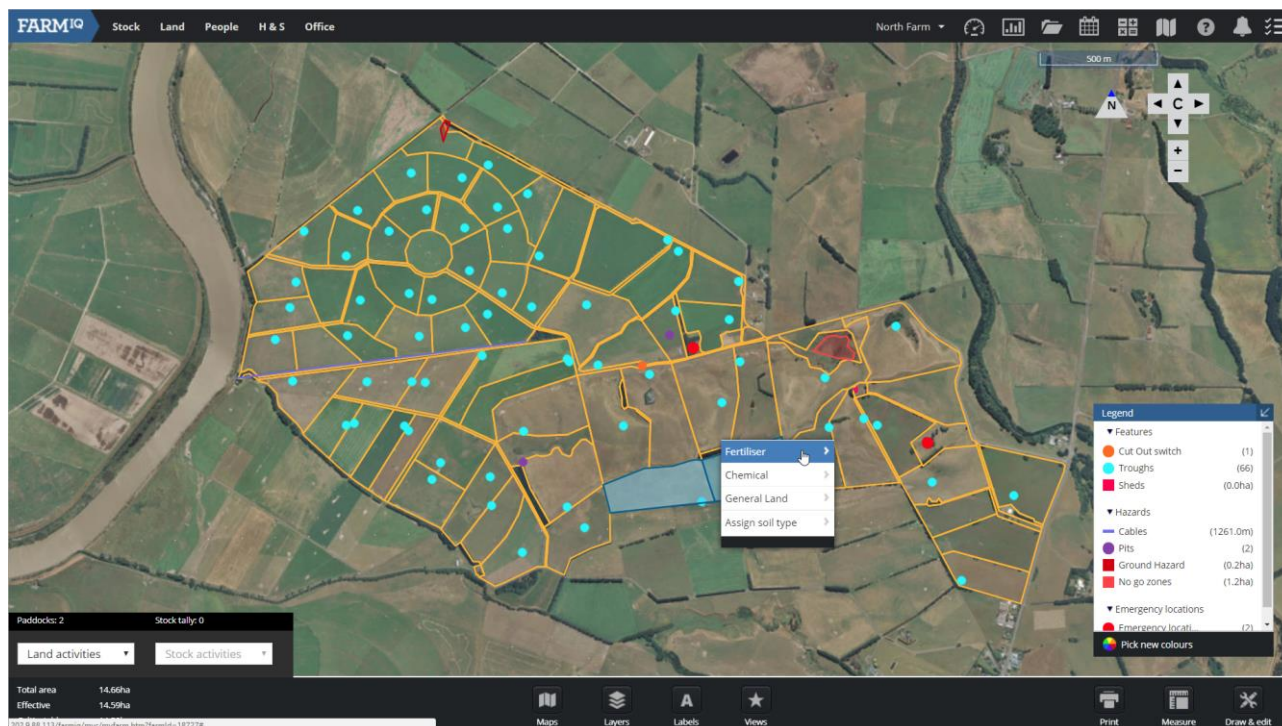




Record chemical and fertiliser applications

In this video you will learn how to record chemical and fertiliser applications in FarmIQ.

When you record a chemical or fertiliser application, you can also record how much product was used. FarmIQ will update your farm inventory accordingly.



To record a chemical or fertiliser application select the paddocks where the event happened by clicking them on the map.

Right-click in one of the paddocks and select **Chemical** or **Fertiliser**. I am going to record a fertiliser application.



Fertiliser application Record fertiliser Plan fertiliser

Application date*

Select the type of area

Record fertiliser by Paddocks Block

All paddocks	Eff ha
10b	0
58b	0.06
9b	0
Adams	5.21
Arrons	4.81
...	...

Selected paddocks	Eff ha	Selected ha*
Airstrip 1	7.26	<input type="text" value="7.26"/>
Airstrip 2	7.33	<input type="text" value="7.33"/>

Total area **14.59**

Select the **Application date**, whether you are recording the event by **Total**, **Effective** or **Cultivable** area

Fill in the **Application details**.

Fertiliser application Record fertiliser Plan fertiliser

Application date*

Select the type of area

Record fertiliser by Paddocks Block

Select

- Superphosphate (Current)
- Urea (Current)
- Agricultural lime
-
- 10% Potash Sulphur Super
- 10% Potash Super
- 15% Potash Magphos 40kg Bags
- 15% Potash Serpentine Super
- 15% Potash Sulphur Super (Current)
- 15% Potash Sulphur Super (Old)
- 15% Potash Sulphur Super (Old)
- 15% Potash Super (Current)
- 15% Potash Super (Old)
- 15% Potash Super Mag N
- 20% Pot DAP Sulphur Super
- 20% Potash Gold Super 0-7-8
- 20% Potash Nitroboost
- 20% Potash Serpentine Super
- 20% Potash Sulphur Super (Current)

Selected paddocks	Eff ha	Selected ha*
Airstrip 1	7.26	<input type="text" value="7.26"/>
Airstrip 2	7.33	<input type="text" value="7.33"/>

Total area **14.59**

	N kg/ha	P kg/ha	K kg/ha	S kg/ha	Mg kg/ha	Ca kg/ha	Na kg/ha	Total (t)	Price (\$/t)	Price/ha
Select	0.00	0.00	0.00	0.00	0.00	0.00	0.00	<input type="text" value="0.000"/>	<input type="text"/>	<input type="text" value="0.00"/>
+ Add product										
- Add batch										
Totals	<input type="text" value="0.00"/>	<input type="text" value="0.00"/>	<input type="text" value="0.00"/>	<input type="text" value="0.00"/>	<input type="text" value="0.00"/>	<input type="text" value="0.00"/>	<input type="text" value="0.00"/>	<input type="text" value="0.000"/>	<input type="text" value="0.000"/>	<input type="text" value="0.00"/>

You can select a Product from the drop down list or click **Add product** to add a new product.

Products that you have used recently will be at the top of the list.



Application details

Application method: Supplier:

Number of fertilisers:

Fertiliser name*	Batch	kg/ha*	N kg/ha	P kg/ha	K kg/ha	S kg/ha	Mg kg/ha	Ca kg/ha	Na kg/ha	Total (t)*	Price (\$/t)	Price/ha
<input type="text" value="Urea (Current)"/> + Add product	<input type="text" value="BU2522"/> + Add batch	<input type="text" value="65"/>	29.90	0.00	0.00	0.00	0.00	0.00	0.00	<input type="text" value="0.948"/>	<input type="text" value="0.00"/>	<input type="text" value="0.00"/>
Totals		<input type="text" value="65.00"/>	29.90	0.00	0.00	0.00	0.00	0.00	0.00	<input type="text" value="0.948"/>	<input type="text" value="0.000"/>	<input type="text" value="0.00"/>

Urea In stock: 1.0T Used: 0.9T Remaining: 0.1T

Select the batch you are using, or click **Add batch**, and add a new batch.

Complete the **Application details**.

Costs

Type*	Details	Unit	Rate	Qty	Total*
+ Add another cost					

Total cost:

Notes

Attachments

You can record **Costs**.

You can record further information in the notes and you can upload attachments.

Once you are finished, click **Save**.



The screenshot shows the FARM IQ web interface. At the top, there is a navigation bar with the FARM IQ logo and menu items: Stock, Land, People, H & S, Office. On the right side of the navigation bar, it says 'North Farm' and includes several utility icons. The main content area features a large green checkmark icon and the text 'This fertiliser application has been saved.' Below this is a button that says 'Record another activity using these paddocks'. Underneath the button is a section titled 'Summary of activities recorded using these paddocks' which contains a table with the following data:

Event	Product	Application rate	Amount	Total cost	Total cost/ha
Fertiliser application (actual)	Urea (Current)	65kg/ha			

You have now recorded and saved your application, and your product inventory has been updated with the products and batches that you used in this event.