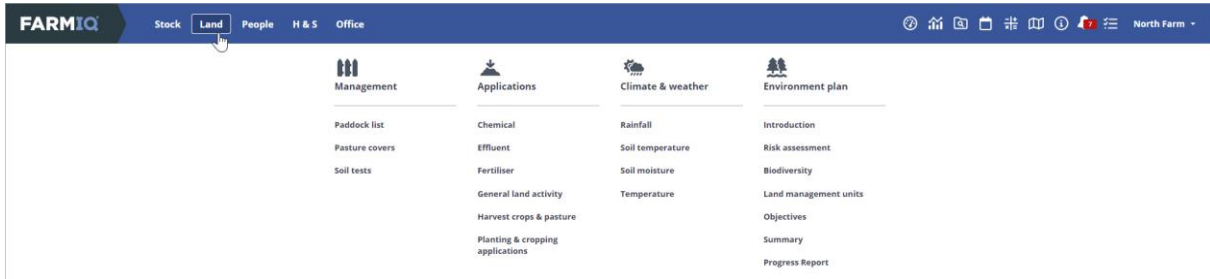
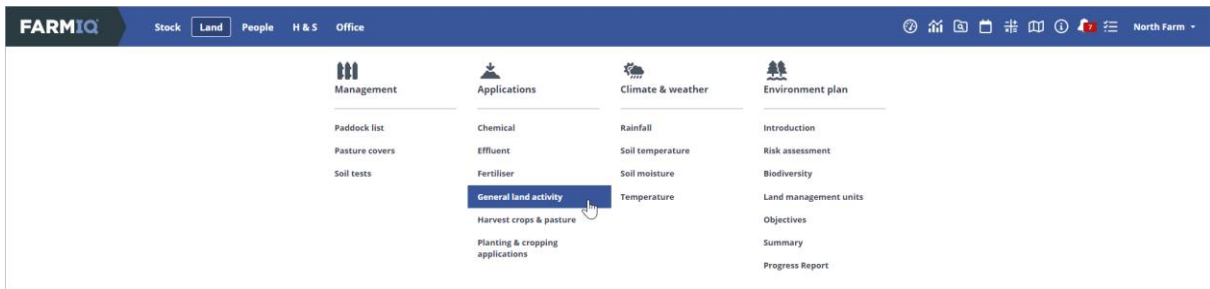


Recording Land Events

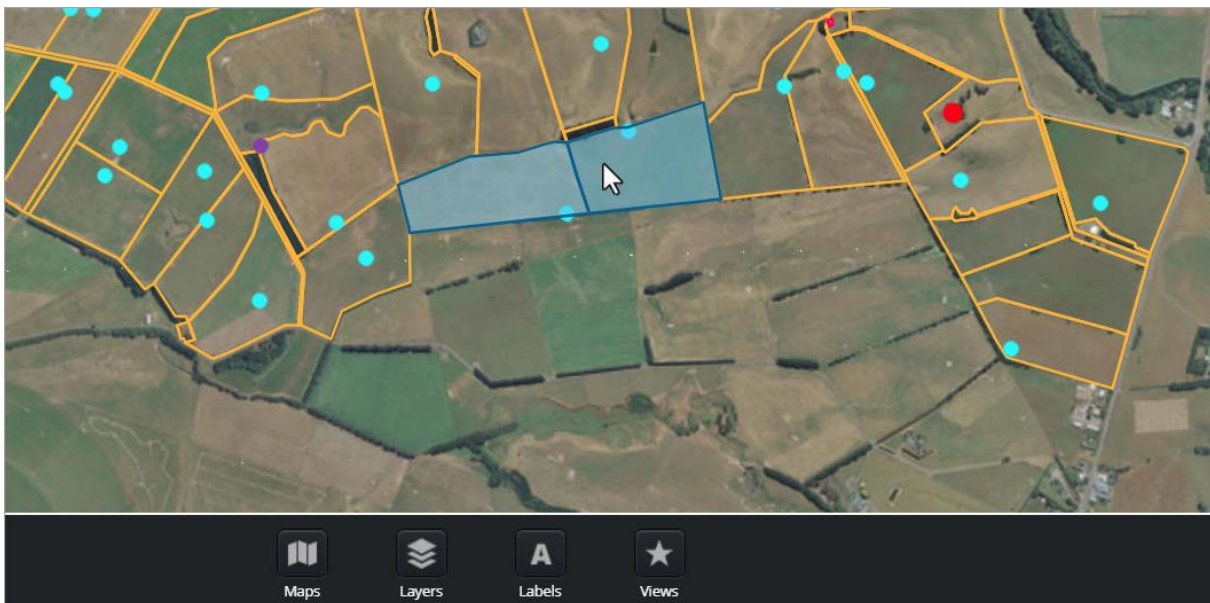
In this tutorial you will learn how to record land activities in FarmIQ.



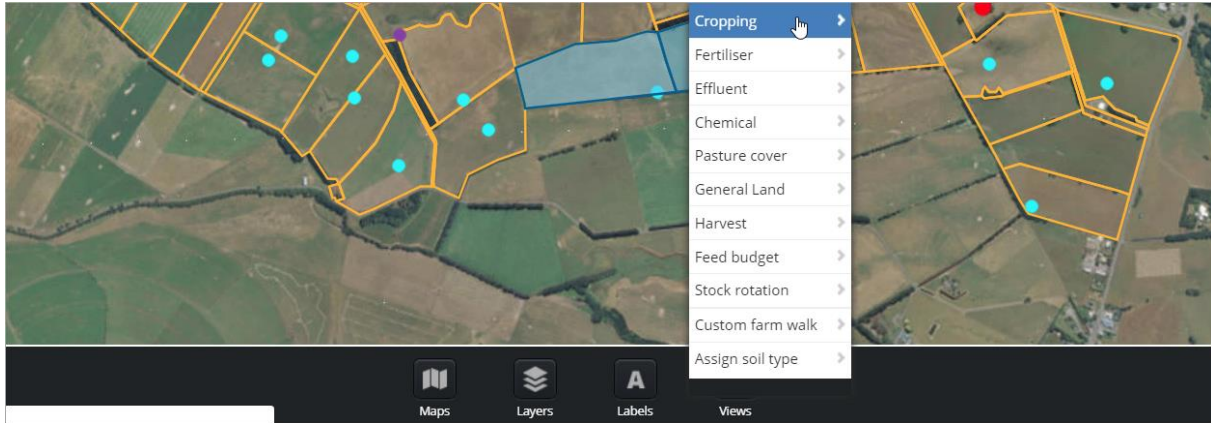
You can record a wide range of land activities in FarmIQ, including chemical, fertiliser, planting and harvest events.



If the event or activity you want to record is not on the list, you can make a diary note using **General land activity**.



An easy way to record a land application is to select the paddocks where the event happened by clicking them on the map.



Right-click one of the paddocks and select the event you want to record. In this example I am going to record a **Cropping** event.

Planting & cropping Record planting Plan planting

Planting Date *

Select the type of area Total Effective Cultivable

Record planting by Paddocks Block

All paddocks		Selected paddocks		
	Cul ha		Cul ha	Selected ha
10b	0.74	Airstrip 1	7.26	7.26
58b	0.06	Airstrip 2	7.33	7.33
9b	0.13			
Adams	5.21			
Arrons	4.81			
Dee...	5.96			

Total area **14.59**

Enter the **Date** and whether you are recording the event by **Total**, **Effective** or **Cultivable** area.

Planting details

Planting type

Apply by Seed mix Individual cultivar

Complete the details for the event. For this cropping event, I will select the type of planting as a crop and if it was a seed mix or individual cultivar.

Planting details

Planting type

Apply by Seed mix Individual cultivar

Enter Crop details

Supplier	Treatment	Method	Rate	Total seed
<input type="text" value="Select"/> <input type="dropdown"/>	<input type="text" value="Bare"/> <input type="dropdown"/>	<input type="text" value="Roller Drill"/> <input type="dropdown"/>	<input type="text" value="kg/ha"/>	<input type="text" value="kg"/>

[+ Add row](#)

Select the product.



Supplier	Product	Batch	Treatment	Method	Rate	Total seed
Select	Bettagraze		Bare	Direct Drill	kg/ha	0.00 kg
Type: Maize						

If the product you are using is not listed, you can click **Add product**.

Supplier	Product	Batch	Treatment	Method	Rate	Total seed
Select	Bettagraze		Bare	Direct Drill	kg/ha	0.00 kg
Type: Maize						

Then select the batch you are using. Click **Add batch** if it is not already recorded in your inventory.

Enter Crop details

Supplier	Product	Batch	Treatment	Method	Rate	Total seed
Select	Bettagraze		Bare	Direct Drill	60 kg/ha	875.4C kg
Type: Maize						
+ Add row						

Costs

Type	Details	Unit	Rate	Qty	Total
+ Add another cost					
Total cost					
\$ 0.00					

Notes

Attachments

From computer
 From file library

Cancel Save

Complete the rest of the event details, including costs if you know them. Click **Save**.

FARMIQ
Stock Land People H & S Office
North Farm

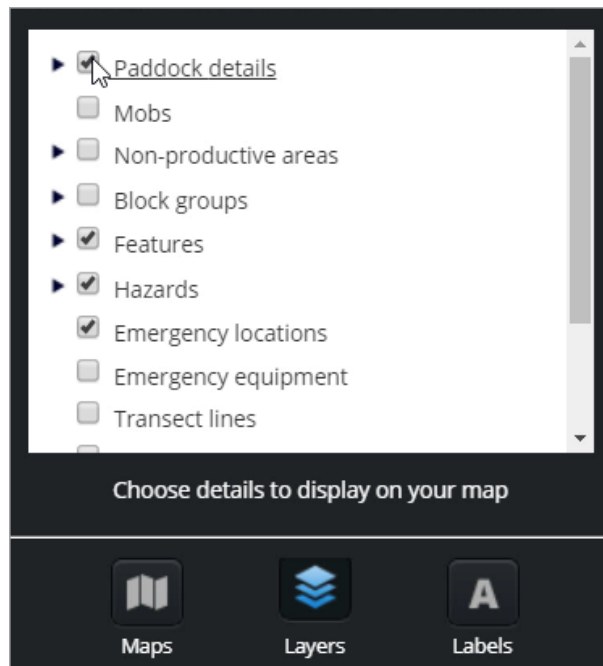
This planting and cropping event has been saved.

[Record another activity using these paddocks](#)

Summary of activities recorded using these paddocks

Event	Product	Application rate	Amount	Total cost	Total cost/ha
Planting application (actual)	Bettagraze	60 kg/ha			

You can record another activity using these paddocks or click the **Map** icon to return to the map.



If you have recorded a cropping event, you can view it on the map. Click **Layers**, select **Paddock details**.



In this tutorial you have learned how to record land activities in FarmIQ.