

Introduction to the mobile apps

In this video you will learn about the FarmIQ mobile apps – where you can get them, what they do and how they work.

There are two FarmIQ apps.

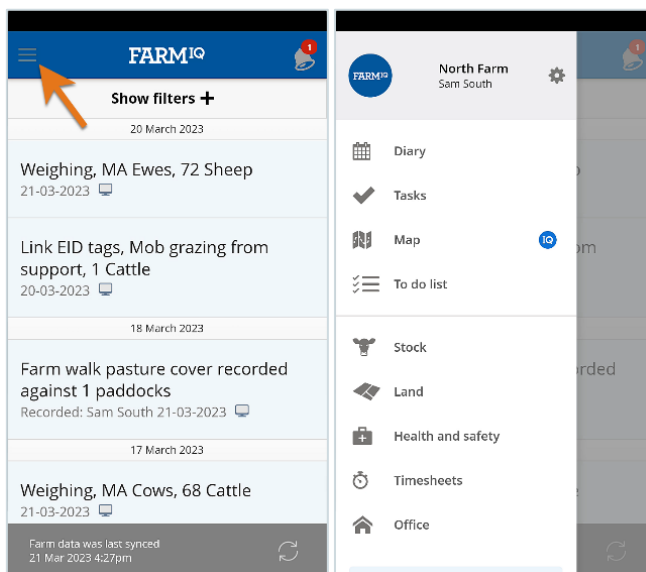
The original FarmIQ app is called **FarmIQ Classic**.

And we've released a new app, that has new and enhanced features with more to come. It's simply called **FarmIQ**.

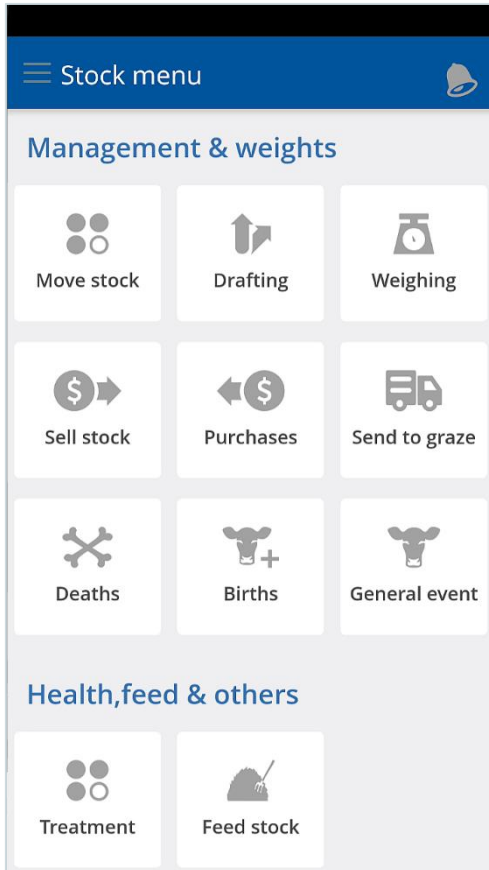
You can use the apps together, and switch between them depending on what you need to know, or what you need to record, when you're out on the farm.

If you don't already have the apps on your phone, you'll need to download them, from the Apple app store or Google play store.

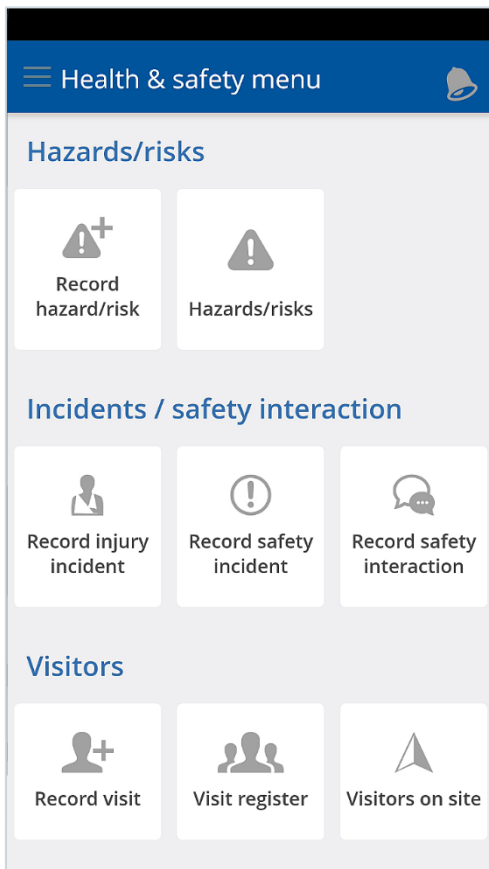
The first time you open each app, you'll need to log in. Just use your FarmIQ login details.



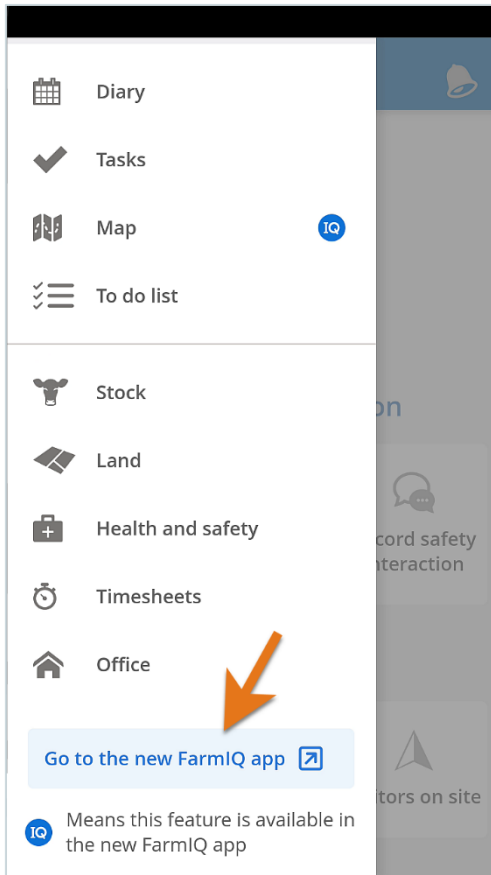
In FarmIQ Classic, tap the menu icon at the top left to explore the features.



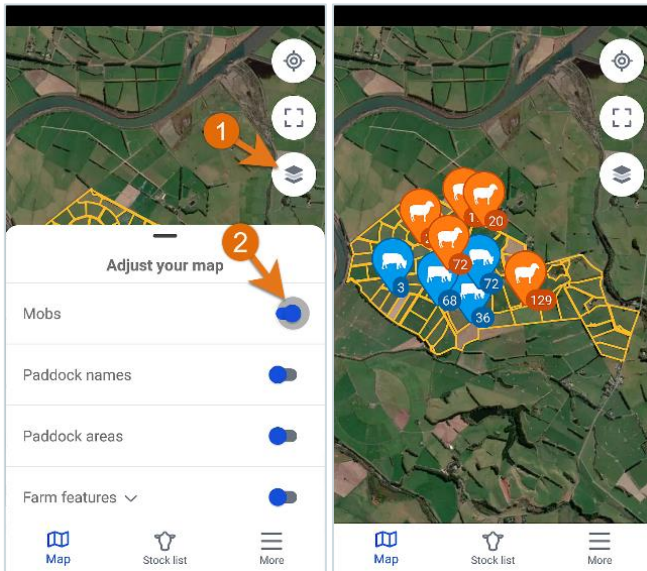
You can record events as they happen, like **Stock** deaths or sales...



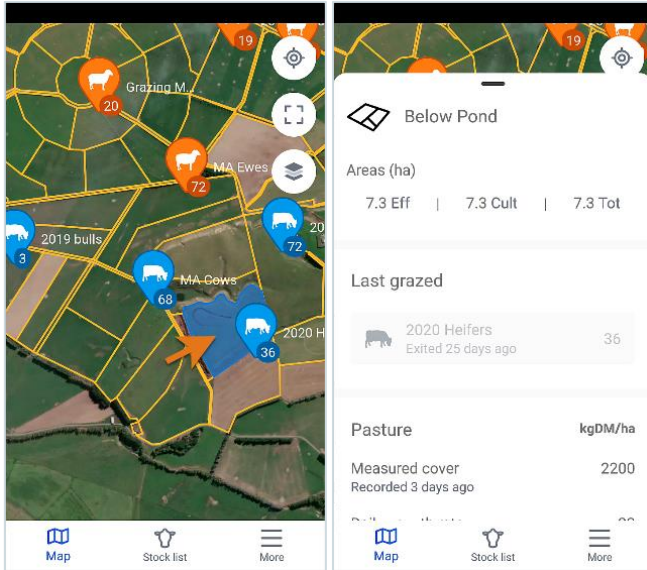
... and **Health and safety** incidents – or see farm visitors.



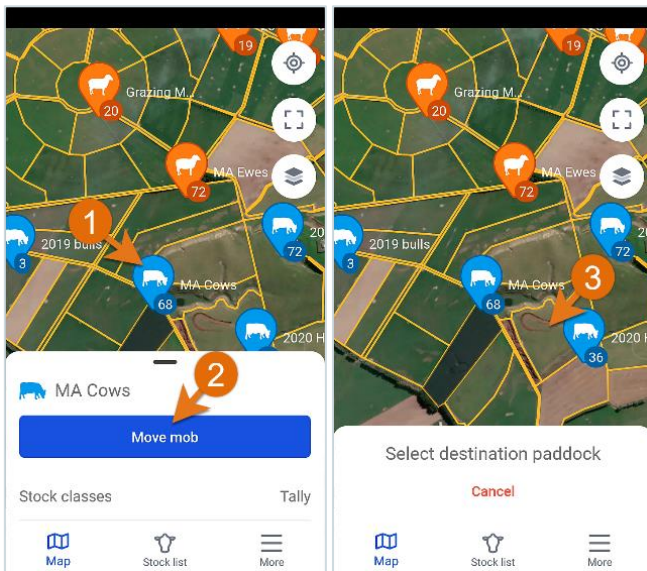
If you've set up the new app, you can tap **Go to the new FarmIQ app** to switch straight to it.



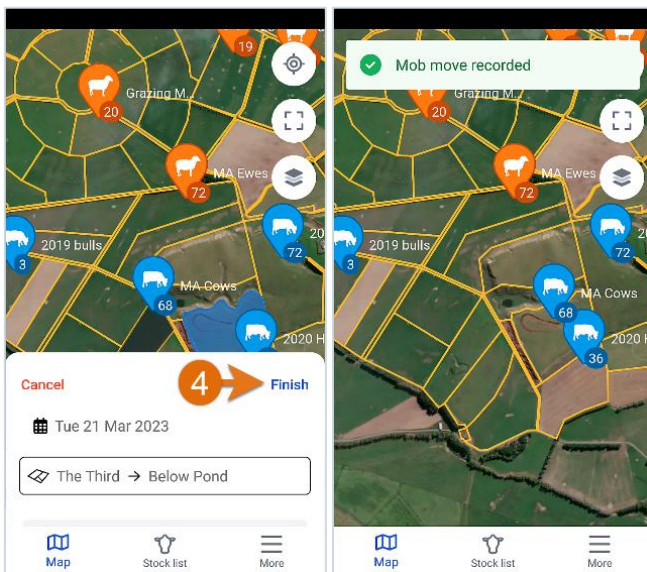
On the new map, you can see information like mob locations

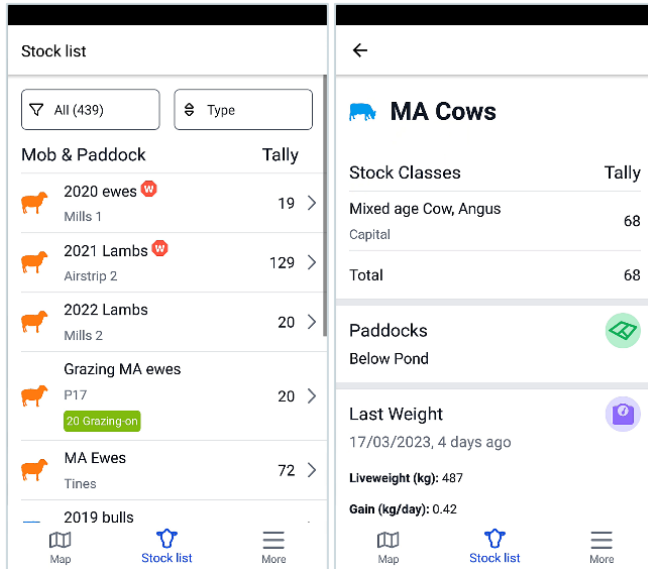


and paddock details,

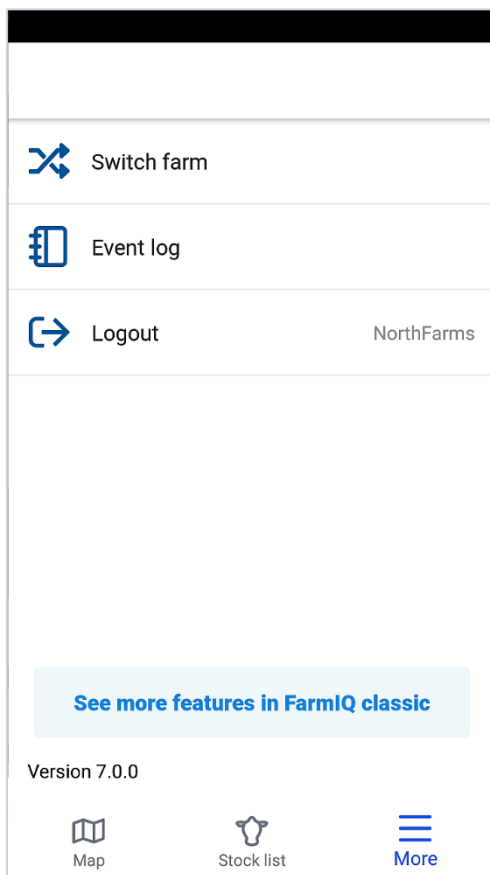


and record events, such as mob moves.





Tap **Stock list** to see your stock list and detailed mob information.



Tap **More** to switch to another farm, log out, or switch back to FarmIQ Classic.

Keep an eye out for updates, as we work to make the new FarmIQ app do more and more of what you need. Eventually, it will take over from FarmIQ classic, which will be retired.

You now have an overview of the FarmIQ mobile apps.

To find out more, visit [the FarmIQ online help](#).