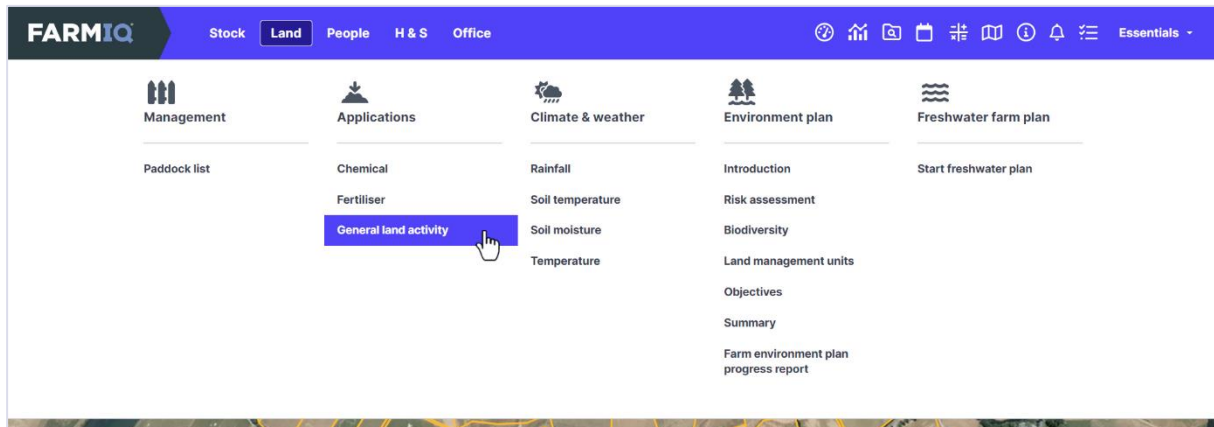


Recording land activities

In this video, you will learn how to record land activities in FarmIQ.

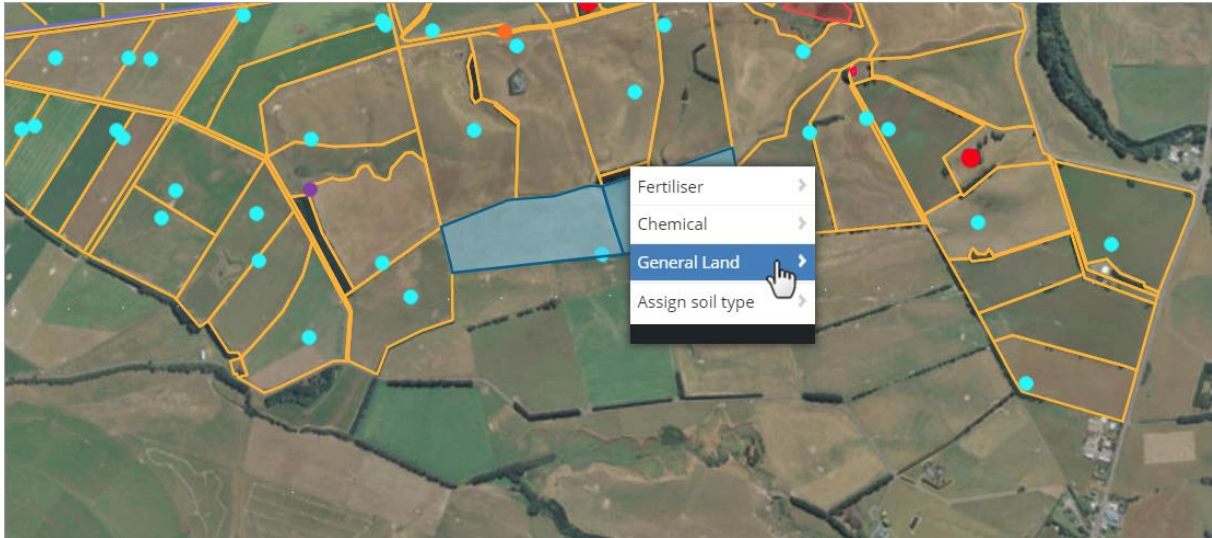


For example, you can record fertiliser and chemical use.

If the event or activity you want to record is not on the list, you can make a diary note using a **General land activity**.



An easy way to record an activity is to select the paddocks where the event happened, by clicking them on the map.



Right-click one of the paddocks and select **General Land**.

General land activity Actual Planned

Activity date *

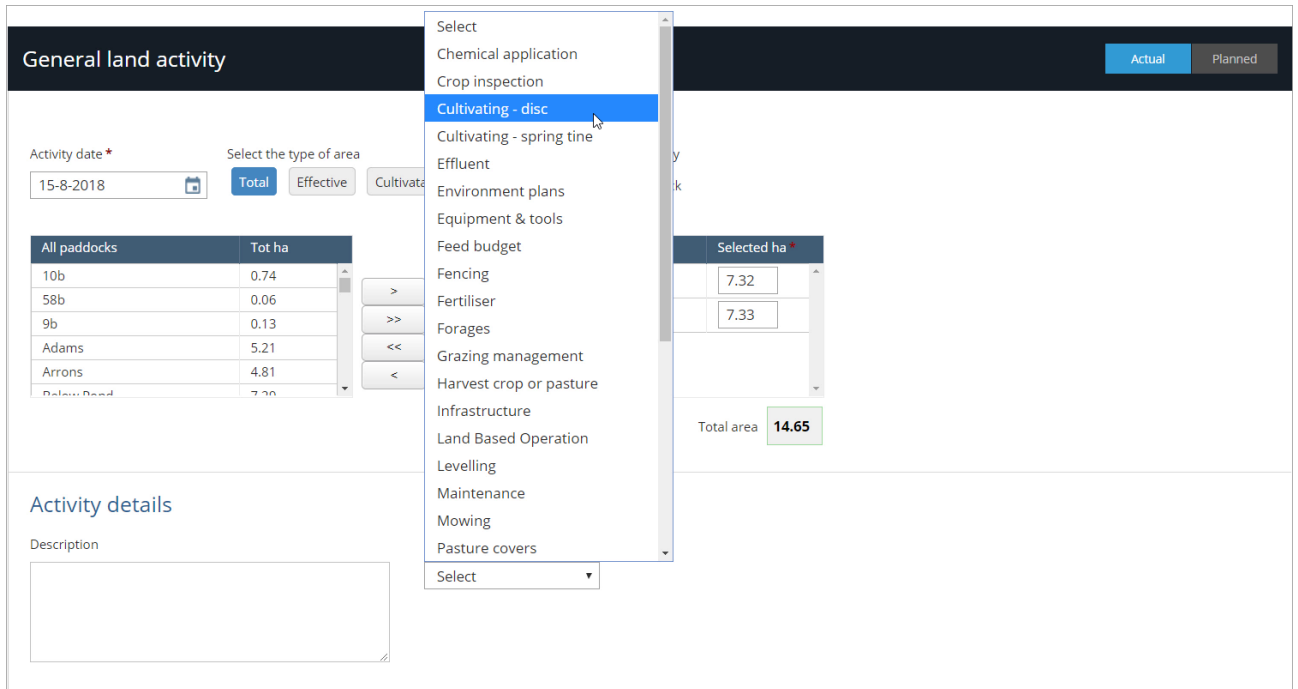
Select the type of area

Record general land by Paddocks Block

All paddocks	Tot ha		Selected paddocks	Tot ha	Selected ha*
10b	0.74	>	Airstrip 1	7.32	7.32
58b	0.06	>>	Airstrip 2	7.33	7.33
9b	0.13	<<			
Adams	5.21	<			
Arrons	4.81				
Bellevue Road	7.70				

Total area **14.65**

Select the Application date and whether you are recording the event by Total, Effective or Cultivable area.



General land activity

Activity date* 15-8-2018

Select the type of area: Total Effective Cultivate

All paddocks	Tot ha
10b	0.74
58b	0.06
9b	0.13
Adams	5.21
Arrons	4.81
Belton Road	7.30

Activity details

Description

Selected ha: 7.32, 7.33

Total area: 14.65

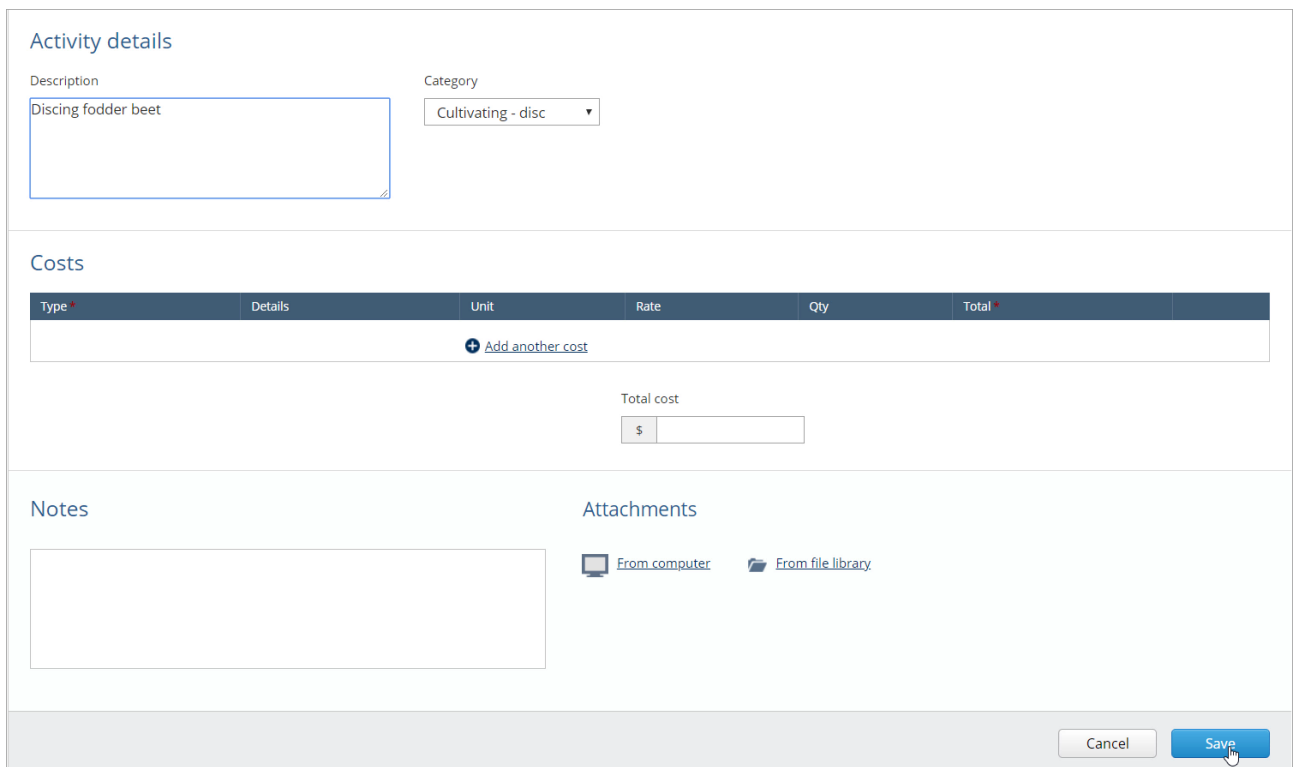
Category dropdown menu:

- Select
- Chemical application
- Crop inspection
- Cultivating - disc**
- Cultivating - spring tine
- Effluent
- Environment plans
- Equipment & tools
- Feed budget
- Fencing
- Fertiliser
- Forages
- Grazing management
- Harvest crop or pasture
- Infrastructure
- Land Based Operation
- Levelling
- Maintenance
- Mowing
- Pasture covers
- Select

Complete the details for this event or activity.

For example, in the General land activity select the **Category** that best describes this activity. You can add the full details to the description box.

You can record costs and enter notes.



Activity details

Description: Discing fodder beet

Category: Cultivating - disc

Costs

Type	Details	Unit	Rate	Qty	Total
+ Add another cost					

Total cost: \$

Notes

Attachments

From computer From file library

Cancel Save

Once you are finished, click **Save**. You have now recorded and saved your General land activity.