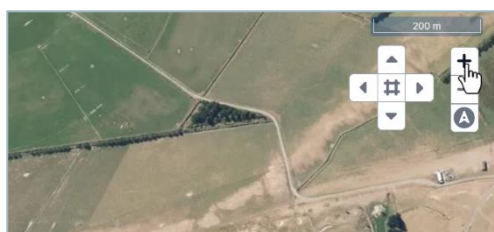


# Drawing boundaries and paddocks

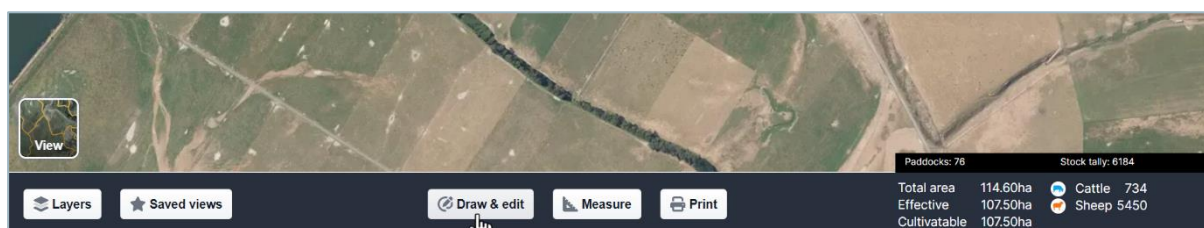
In this tutorial you will learn how to draw boundaries and paddocks.

When drawing a farm map or a new block, you draw the boundary first and then the paddocks within that boundary.

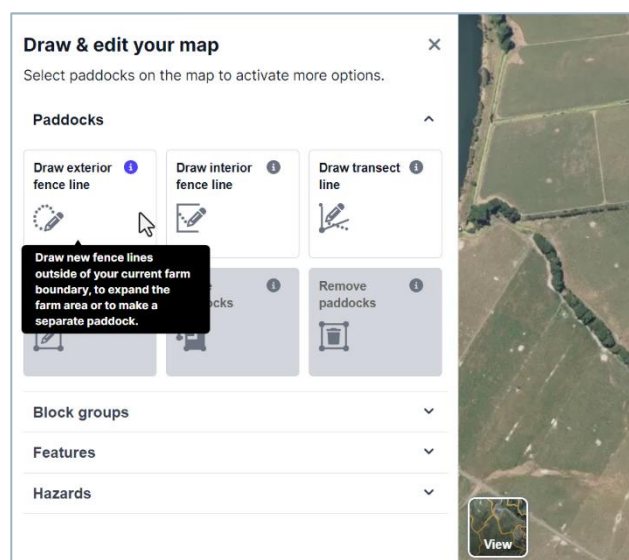
To begin, first move the map to the location of the new boundary.



To move the Map, you can click and drag with the mouse, zoom in and out with the mouse wheel or use the plus and minus icons on the map.



Then click **Draw and Edit**, then begin by drawing the boundary.



Click **Draw exterior fence line**.

**Back**

**Draw exterior fence line**

Click the map to place points for a new boundary fence line, extending your current farm area or making a separate paddock. Click and drag points to move them.

Point	Distance	Longitude	Latitude
1	N/A	175.1674	-41.3414
2	86.09m	175.1682	-41.3419
3	71.62m	175.1684	-41.3425
4	126.99m	175.1694	-41.3434
5	19.31m	175.1695	-41.3435
6	252.44m	175.1718	-41.3450
7	23.21m	175.1720	-41.3451

Total length: 579.7m

Place points on the map to draw your boundary. Click the map everywhere the fence line changes direction.

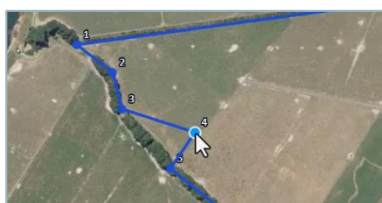
**Back**

**Draw exterior fence line**

Click the map to place points for a new boundary fence line, extending your current farm area or making a separate paddock. Click and drag points to move them.

Point	Distance	Longitude	Latitude
1	966.33m	175.1674	-41.3414
2	86.09m	175.1682	-41.3419
3	71.62m	175.1684	-41.3425
4	126.99m	175.1694	-41.3434
5	19.31m	175.1695	-41.3435
6	252.44m	175.1718	-41.3450
7	23.21m	175.1720	-41.3451
8	177.76m	175.1737	-41.3461
9	770.61m	175.1788	-41.3403

Place the last point back on the first point to finish.



If you aren't happy with a point on the line, you can move it...

3	71.62m	175.1684	-41.3425		
4	83.80m	175.1686	-41.3433		
5	78.18m	175.1695	-41.3435		
6	252.44m	175.1718	-41.3450		

... or delete it.

You can add a point to your fence by clicking and holding the existing line. Then move the new point to where you want it to go.

1	966.33m	175.1674	-41.3414
2	86.09m	175.1682	-41.3419
3	71.62m	175.1684	-41.3425
4	114.98m	175.1694	-41.3433
5	33.67m	175.1695	-41.3435
6	252.44m	175.1718	-41.3450
7	23.21m	175.1720	-41.3451
8	177.76m	175.1737	-41.3461
9	770.61m	175.1788	-41.3403

Total length: 2496.7m

Next

Layers Saved views Draw & edit Measure Print

Total area 114.60ha  
Effective 107.50ha  
Cattle 734  
Sheep 5450

Once you have completed the boundary, click **Next**.

Back

**Draw exterior fence line**

Exterior paddock details

Paddock name \*

New Paddock

☒ Owned ☐ Leased

Land type \*

Productive

Soil type

Select Soil Type

Areas (ha)

Total area \* Effective \* Cultivable \*

29.65 ha 29.65 ha 29.65 ha

Edit exterior fenceline

Save

Enter a name and select **Productive** land type, then click **Save**.

Once you are happy with the boundary, you can add individual paddocks.

**Draw & edit your map**

Select paddocks on the map to activate more options.

Paddocks

Draw exterior fence line

Draw interior fence line

Draw transect line

Edit paddock dimensions

Remove paddocks

Block groups

Features

Hazards

View

Select **Draw interior fence line**.



We recommend that you work through your farm from one side to the other.

Begin your first point on an existing fence line.

Back

**Draw internal fence line**

Click the map to place points for a new fence line, splitting an existing paddock or fencing around something inside a paddock. Click and drag points to move them.

Point	Distance	Longitude	Latitude	
1	N/A	175.1723	-41.3409	
2	374.17m	175.1695	-41.3435	

Total length: 374.2m

Next

Place points to mark out the paddock, finishing back on an existing fence line.

Please note that you do not need to draw the entire fence line around the paddock, just the new segment of fence.

When you are happy with the fence line you have drawn, click **Next**.

Back

**Draw internal fence line**

**Interior paddock details**

Enter details for the orange paddock

**Paddock name \***

☒ Owned ☐ Leased

**Land type \***

Productive

**Soil type**

Select Soil Type

**Areas (ha)**

Total area *	Effective *	Cultivable *
24.51 ha	24.51 ha	24.51 ha

Edit interior fenceline

Next paddock

The new paddocks are shaded orange and yellow.

Enter the **Paddock name** and select the **Land type** for the orange paddock.

You can also change other paddock details.

When you are done, click **Next paddock...**

**Back**

**Draw internal fence line**

**Interior paddock details**  
Enter details for the yellow paddock

**Paddock name \***  
West paddock

☒ Owned ☐ Leased

**Land type \***  
Productive

**Soil type**  
Select Soil Type

**Areas (ha)**

Total area *	Effective *	Cultivable *
5.14 ha	5.14 ha	5.14 ha

**Edit interior fenceline** **Save**

Total area 114.60ha Effective 103.60ha Cattle 734 Sheep 545

... and enter the details for the yellow paddock.

The two paddocks cannot have the same name.

To finish the fence line, click **Save**.

**Draw & edit your map**

Select paddocks on the map to activate more options.

**Paddocks**

- Draw exterior fence line
- Draw interior fence line
- Draw transect line
- Edit paddock dimensions
- Merge paddocks
- Remove paddocks

**Block groups**

**Features**

**Hazards**

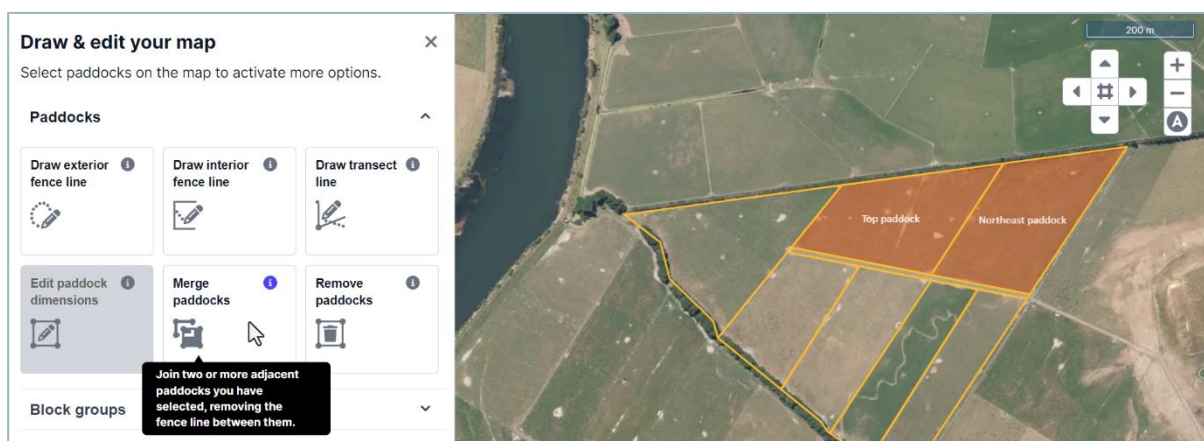
**We've updated your map**  
Paddocks have been split

View

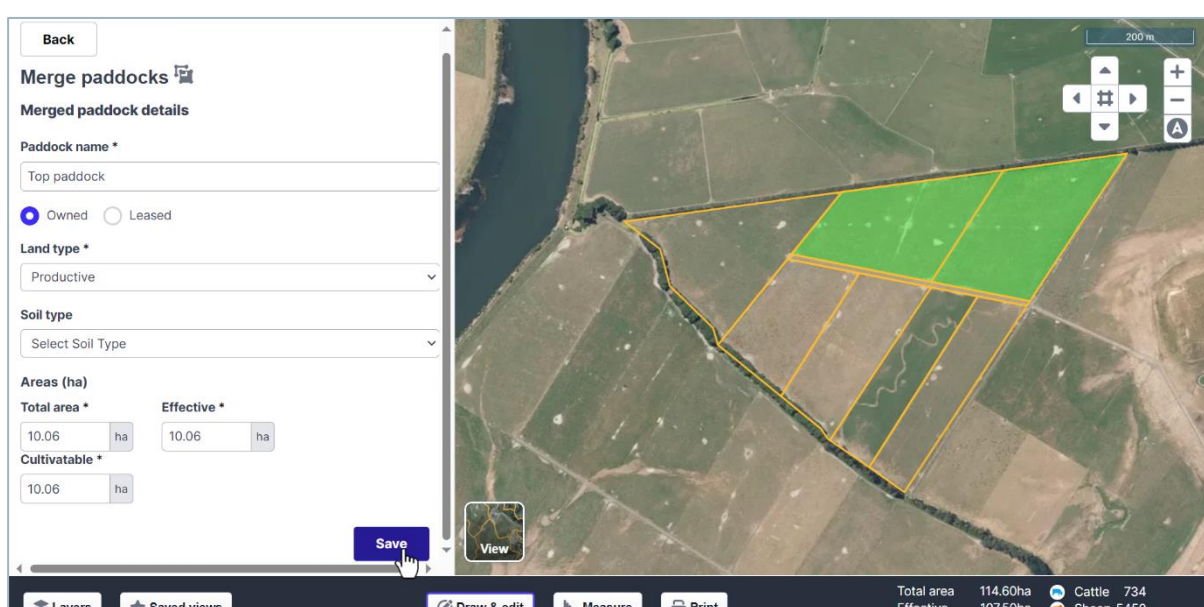
Continue drawing your paddocks until all the fence lines are on the map.

If you need to remove an interior fence line, you can merge it into an adjacent paddock or paddocks.

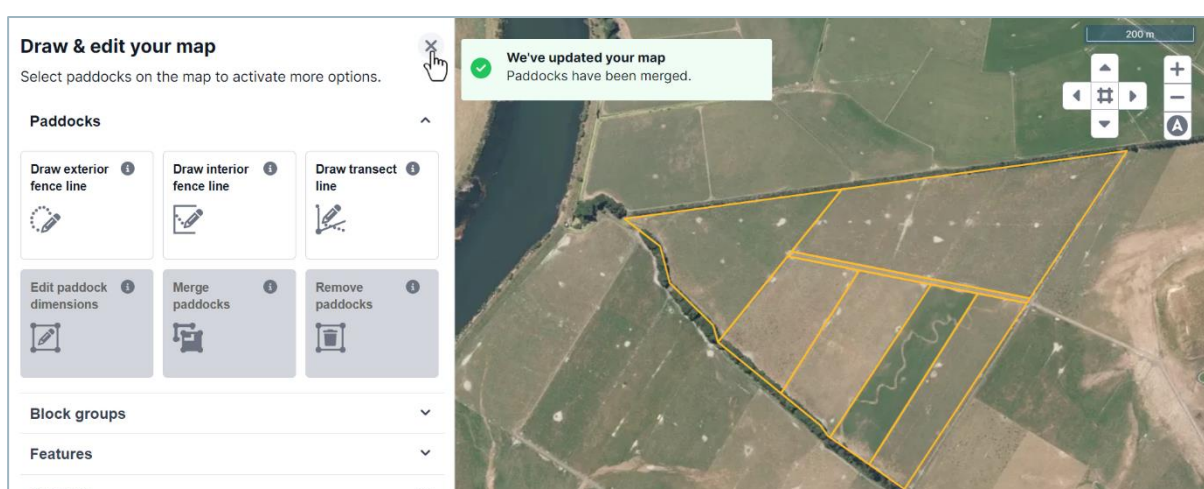




To merge paddocks, click the paddocks you want to merge. Click **Merge paddocks**.



You can adjust the details for the merged paddock, then click **Save**.



The selected paddocks are now merged into a single paddock and the fences separating them have disappeared.

This tutorial has shown you how to draw a farm block.